

Paper Type: Original Article



Smart Home with Neural Network Based Object Detection

Agyan Panda^{1*}, Sheila Maria Muniz²

¹ Department of Computer Science and Engineering, OEC Engineering College, OD, India; hmpendrive@gmail.com.

² Municipal Secretary of Education of Jijoca de Jericoacoara, Jijoca de Jeric., CE, Brazil; sheylamuniz@hotmail.com.

Citation:



Panda, A., & Muniz, Sh. M. (2022). Smart home with neural network based object detection. *Big data and computing visions*, 2(1), 40-48.

Received: 29/01/2022

Reviewed: 12/02/2022

Revised: 26/02/2022

Accepted: 18/03/2022

Abstract


Household object detection is a brand-new computer technique that combines image processing and computer vision to recognise objects in the home. All objects stored in the kitchen, room, and other areas will be detected by the camera. Low-end device techniques for detecting people in video or images are known as object detection. With picture and video analysis, we've lost our way.

Keywords: Object detection model, Neural network, Deep learning, Python.

1 | Introduction

The enhancement of science and technology leads to make the life more comfortable than older days. The emerging technologies like software engineering [1] and [2], energy management [3], [4] and [5], transportation problem [6], [7] and [8], wireless sensor network [9]-[17], uncertainty problem [18]-[23], face recognition [24], bellman algorithm [25], neural network [26], routing [27] and [28], fuzzy shortest path [29] and [30], cloud computing [31], distributive environment [32], mixed environment [33] programming language [34], neutrosophic shortest path [35], [36] and [37], optimal path [38], multi-objective optimal path [39], powershell [40], answer note [41], making the products more intelligent and self-healing based. The smart city [42] and [43] applications like smart water [44], [45] and [46], smart agriculture [47] smart grid [42] and [43], smart parking [48], smart resource management, etc. are based on IoT [49], [50] and [51] and IoE technologies.

The topic of household object detection has been finding with in history many times, but each approach deals with a different method. The implementation of machine learning in this area uses a lot of mathematical calculations. Each image in the video feed needs to be further divided into pixels and analyzed in details. This project is equipped with image detection algorithms in order to make lives of elderly people easier.

 Licensee Big Data and Computing Visions. This article is an open access article distributed under the terms and conditions of the Creative Commons Attribution (CC BY) license (<http://creativecommons.org/licenses/by/4.0>).



Corresponding Author: hmpendrive@gmail.com



<http://dx.doi.org/10.22105/bdcv.2022.326975.1045>

In place of manual calculation, different frameworks are used like regression based framework, region proposal based framework [52]. The model needs to be given the input. Further processing is done using deep neural networks. In this, there are more than one layer in the network helps increase the accuracy of the output. People at their old age face difficulty in visually recognizing object and they need a 24*7 human assistance. So, this system aims to give the remote in their hands. The remote will identifies the object and speaks out the name of object and old age people and eyeless people can easily get find the object. As the aerial of technology has made advancement, object detection is playing a very important role. The power of machine to recognize object just like a human does, can be used in a variety of domains. This project deals with one such domain, object detection using video and image for home assistance and also eye tracking system.

The Dalal-Triggs detector [53], which won the 2006 PASCAL object detection problem, used a standard gradient histogram (SOG) filter function to describe a group of objects [54]. This sensor uses a moving window technique, where a filter is added to any image or video location. We may think of the sensor as just a compiler that accepts an object, a position within the same image and a scale as feedback. The classifier decides whether at the specified location and scale and instance of the target group occurs or not.

2 | Household Object Detection Methods

Household object detection is a part of old age person which is detect all object in house. Different methods are given below [55].

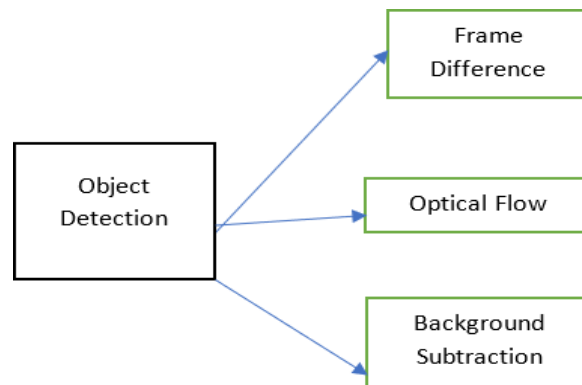


Fig. 1. Object detection methods.

Frame difference. Detection of moving object from a series of frames taken from a static camera is commonly achieved by means of frame gap. The frame differential approach is the common movement detection approach. This approach adopts variations dependent on pixels to locate the moving object [56] and [57].

Optical flow. On the image plane, optical flow is defined as the apparent movement of individual pixels. Sometimes it serves as a decent approximation to the actual physical motion projected onto the plane of the film. Many optical flow estimation methods assume that a pixel’s color/intensity under the displacement from one video frame to the next is invariant [57].

Background subtraction. Context subtraction is a common technique to separate the moving parts of a picture by segmenting it into the context and the foreground for an example, the object deducted from the background series. The motion of person movement can be readily observed [58].

The background subtraction is divided into sub-methods. They all are given below:

Recursive. This approach requires little use of a buffer to approximate the context. Then it uses an input element to algorithm update a standard context construct. It means objects from such a long ago will influence the image in the past. Relatively speaking, recursive methods require less computing space but a context error will last longer [59]. Recursive method approaches that are widely used include mixture of gaussian, Kalman filtering and conditional median filtering [60].

Non-recursive. This procedure uses a moving for techniques for estimating contact by saving a buffer from previous L video frames. It is estimating the history by evaluating the temporal variance of a pixel in the buffer [59].

3 | Literature Review

A literature review or narrative review is a type of review article. A literature reviews is a scholarly paper, which includes the current knowledge including substantive findings, as well as theoretical and methodological contributions to a particular topic [60]. In such an un-supervised training area, this group suggested model, neural network would outperform human performance in tasks such as speech recognition, image recognition, predicting. We can render any standard model capable of solving multiple tasks in various application domains [61].

Advantage. Illustratively, the paper describes gradient descent, back-propagation, and Stochastic Gradient Descent (SGD) principles for transmitting data to specific neural models. Methods of optimization include SGD, Ad grad, Ad Delta, RM Sprop, and Adam which help to evaluate the learning rate. Intuitions from this paper help to realize that a broad dataset makes for more accurate tests [61].

Disadvantage. Larger weights are not stored, and the parameter shifting results. These boundaries often limit proper back- propagation which eventually leads to reduced accuracy [61].

This paper came up with substantially better reliable ConvNet architectures later on, which not only achieve region of the art precision on ILSVRC identification and optimization tasks, but are also relevant to other object recognition datasets, where outstanding efficiency is achieved even if used as part of a fairly simple pipeline [62].

Advantage. The teaching scale is dynamically calculated by either single-or multi-teaching. The model itself will change the scale for the latter by controlling the jittering out of data. Fully linked network is implemented at the end, which improves the parameter by having a more robust output [63].

Disadvantage. As the fully connected layer has expanded parameters, the operation of the fully connected layer in certain situations allows output to be affected by the device threshold.

4 | Discussion of Existing System

Early work on object recognition was based on strategies for the matching of templates and basic partly based models. Methods were later adopted, based on statistics. This original popular family of object detectors, all focused on mathematical classifiers, laid the foundations for most study interms of preparation, measurement and classification techniques [64]. Object recognition is a vital function for any device that communicates with humans; it is the most popular computer vision feature. Many external identification problems were studied, however. Most instances refer to objects in which humans often communicate, such as other person and body arts, such as ears, hands, and arms, as well as vehicles, such as cars, aircraft, and animals [65].

5 | Disadvantage of Existing System

Most object recognition systems consider the same simple technique, generally known as sliding window: an exhaustive search is performed in order to identify the objects that appear in the image at various sizes and locations. This quest requires use of a classifier, the detector's central component, indicating whether or not a given image patch corresponds to the target. Since the classifier essentially operates at a specified scale and patch size, many iterations of the input image are created at various sizes, and the classifier is used to identify all potential patches of the same size, with each version of the image downscaled. They cannot accommodate well the case of two cases of the object being next to each other, and may not be sufficient to find the object.

6 | Proposed System

Household object detection system aims at achieving high accuracy in categorising the common household items for assistance in movement and other basic activities of visually impaired individuals. The system focuses on non-gpu deployment of detection algorithms for efficient use and easy access. The system at hand enables following.

- *Real time identification of artefacts on video stream.*
- *Performance rating dependent on predefined degree of trust.*
- *Increase in processing speed by decreased ram intensive process reliance.*

6.1 | Advantage of Proposed System

- *The developed algorithm works properly and is able to detect an item in households.*
- *Estimating the identification of items from individual is finished.*
- *Max target detection distance from camera mounted on computer was a max of 2 metres.*

Objects such as glass, table, human, books, dog, chair etc. are identified and the user is alerted by speech created that tells about the name of the recognized object.

7 | Algorithm Used

The algorithm is a well-defined method that helps a computer to solve a problem. A series of unambiguous instructions is another way of defining the algorithm. Use the word 'unambiguous' is symbolic of no room for contextual interpretation. When you ask your machine to run the same algorithm, with the exact same outcome, it will do so precisely the same way. They are given below:

7.1 | Softmax Function

We use convex analysis and monotone operator theory results to obtain additional softmax function properties that are not yet addressed in the current literature. In particular we show that the softmax function is the log-sum-exp function's monotonous gradient map. By making use of this relation, we show that the inverse temperature parameter defines the Lipschitz and Softmax function co-obligation property [66]. SoftMax feature measures the distribution of the event's probability over various occurrences 'n.' In general terms, this equation would determine the probability of increasing target class for all other target groups. The estimated probabilities for deciding the target class for the specified inputs will be helpful later.

The principal benefit of utilizing Softmax is the spectrum of potential probabilities. The spectrum would be from 0 to 1, and the sum of all odds equals one. If the softmax method used for the model of multi-classification returns the probabilities of each class and the high likelihood of the goal class. The formula computes the exponential (e-power) of the given input value and the of all the values in the inputs. Then

the ratio of the exponential of the input value and the sum of exponential values is the output of the softmax function. The graph in Fig. 2 is a graph which is used to show relation between input value and softmax score.

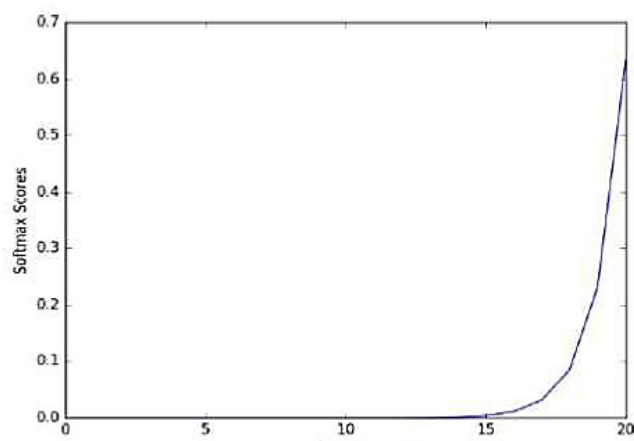


Fig. 2. Graph of softmax function input and output.

7.2 | CNN Classifier

The Co-evolutionary Neural Network (CNN) proposed by LeCun et al. is the most common type of deep neural network in use for machine vision issues [67]. One of the major initial attempts to use CNN for action recognition was by Baccouche et al. in [68]. A 3D coevolutionary neural network is trained in this work to allocate a vector of functions to a small number of consecutive frames. A recurrent neural network makes use of the spatio-temporal evolution of these characteristics for classification. We must create a CNN in this post, capable of classifying pictures. A 3D coevolutionary neural network is trained in this work to allocate a vector of functions to a small number of consecutive frames. A recurrent neural network makes use of the spatio-temporal evolution of these characteristics for classification [69].

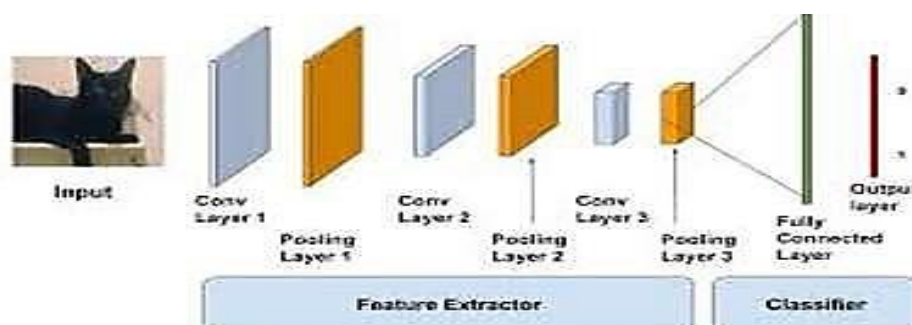


Fig. 3. Classification using CNN.

8 | Result and Discussion

Color is an integral attribute that defines the image quality and, as seen in Fig. 4, colors that appear in the photographs can be described successfully in image classification. The collection of the amount of the quantization rates in the color classification is an essential matter. At the other hand, the more precise multilevel color classification can be accomplished when color representations are merged using various quantization rates. The classification is obtained by merging separate base classifiers, using image histograms as their inputs at various stages of quantization.

The mobile phone object class displayed in Fig. 5 identifies a pattern as cell phones dependent on rectangular pixel density in the foreground.

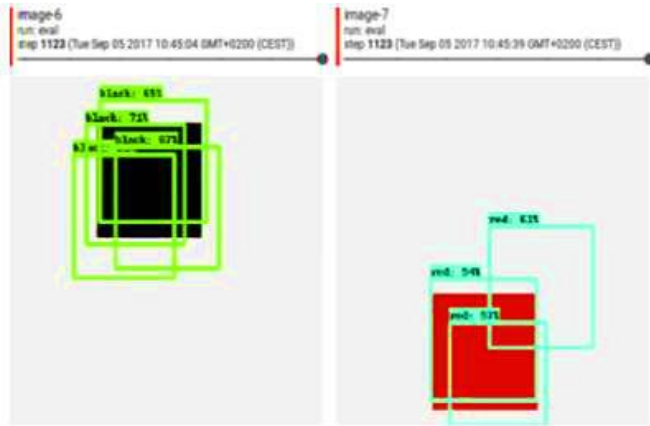


Fig. 4. Base classification for colour identification.



Fig. 5. Mobile object classification.

Although with many interacting artifacts the algorithm can quickly distinguish the dominant groups with ease for these situations the most important aspect concentrated here is the distance between bounding box. The algorithm will differentiate between the class "chair" for the example seen above in Fig. 6.



Fig. 6. Cup object detection (box within box).

9 | Conclusion

Analysing various approaches, it is deduced that it is much more practical and reliable to use deep learning rather than traditional machine learning strategies for target recognition. Implementation of machine learning involves a lot of mathematical equations which are boring to a computer program. Implementing profound coevolutionary neural networks cuts computations by a significant amount. Successfully the generated system recognizes basic objects such as container, table, human, bottle, device, etc. Humans use

all kinds of artifacts in their everyday lives. This initiative also reduces the expense of processing by using CNN as well as precision.



References

- [1] Masuti, M., & Mohapatra, H. (2015). Human Centric Software Engineering. *International journal of innovations & advancement in computer science (IJIACS)*, 4(7), 86-95.
- [2] Mohapatra, H., & Rath, A. K. (2020). *Fundamentals of software engineering: designed to provide an insight into the software engineering concepts*. BPB Publications.
- [3] Mohapatra, H., Debnath, S., & Rath, A. K. (2019). Energy management in wireless sensor network through EB-LEACH. *International journal of research and analytical reviews (IJRAR)*, 56-61. https://easychair.org/publications/preprint_download/tf5s
- [4] Mohapatra, H., Debnath, S., Rath, A. K., Landge, P. B., Gayen, S., & Kumar, R. (2020). An efficient energy saving scheme through sorting technique for wireless sensor network. *International journal*, 8(8), 4278-4286.
- [5] Mohapatra, H., Rath, A. K., Landge, P. B., Bhise, D. H. I. R. A. J., Panda, S., & Gayen, S. A. (2020). A comparative analysis of clustering protocols of wireless sensor network. *International journal of mechanical and production engineering research and development (IJMPERD) ISSN (P)*, 10(3), 2249-6890.
- [6] Kumar, R., Edalatpanah, S. A., Jha, S., & Singh, R. (2019). A Pythagorean fuzzy approach to the transportation problem. *Complex & intelligent systems*, 5(2), 255-263.
- [7] Pratihar, J., Kumar, R., Dey, A., & Broumi, S. (2020). Transportation problem in neutrosophic environment. In *Neutrosophic graph theory and algorithms* (pp. 180-212). IGI Global.
- [8] Pratihar, J., Kumar, R., Edalatpanah, S. A., & Dey, A. (2021). Modified Vogel's approximation method for transportation problem under uncertain environment. *Complex & intelligent systems*, 7(1), 29-40.
- [9] Mohapatra, H., & Rath, A. K. (2019). Fault tolerance through energy balanced cluster formation (EBCF) in WSN. In *Smart innovations in communication and computational sciences* (pp. 313-321). Springer, Singapore.
- [10] Mohapatra, H., & Rath, A. K. (2019). Fault tolerance in WSN through PE-LEACH protocol. *IET wireless sensor systems*, 9(6), 358-365.
- [11] Mohapatra, H., & Rath, A. K. (2021). Fault tolerance in WSN through uniform load distribution function. *International journal of sensors wireless communications and control*, 11(4), 385-394.
- [12] Mohapatra, H., & Rath, A. K. (2020). Fault-tolerant mechanism for wireless sensor network. *IET wireless sensor systems*, 10(1), 23-30.
- [13] Mohapatra, H., & Rath, A. K. (2020). Survey on fault tolerance-based clustering evolution in WSN. *IET networks*, 9(4), 145-155.
- [14] Mohapatra, H., Rath, A. K., Lenka, R. K., Nayak, R. K., & Tripathy, R. (2021). Topological localization approach for efficient energy management of WSN. *Evolutionary intelligence*, 1-11. <https://link.springer.com/article/10.1007/s12065-021-00611-z>
- [15] Mohapatra, H., Rath, S., Panda, S., & Kumar, R. (2020). Handling of man-in-the-middle attack in wsn through intrusion detection system. *International journal*, 8(5), 1503-1510.
- [16] Ulrich, I., & Nourbakhsh, I. (2000, April). Appearance-based place recognition for topological localization. *Proceedings 2000 ICRA millennium conference ieee international conference on robotics and automation symposia proceedings (Cat. No. 00CH37065)* (Vol. 2, pp. 1023-1029). IEEE.
- [17] Mohapatra, H. (2021). *Designing of fault tolerant models for wireless sensor network* (Doctoral Dissertation, Veer Surendra Sai University of Technology). Retrieved from <http://hdl.handle.net/10603/333160>
- [18] Gayen, S., Jha, S., Singh, M., & Kumar, R. (2019). On a generalized notion of anti-fuzzy subgroup and some characterizations. *International journal of engineering and advanced technology*, 8(3), 385-390.
- [19] Gayen, S., Smarandache, F., Jha, S., & Kumar, R. (2020). Interval-valued neutrosophic subgroup based on interval-valued triple t-norm. In *neutrosophic sets in decision analysis and operations research* (pp. 215-243). IGI Global.
- [20] Gayen, S., Smarandache, F., Jha, S., & Kumar, R. (2020). *Introduction to interval-valued neutrosophic subring* (Vol. 36). Infinite Study.

- [21] Gayen, S., Smarandache, F., Jha, S., Singh, M. K., Broumi, S., & Kumar, R. (2020). *Introduction to plithogenic hypersoft subgroup*. Infinite Study.
- [22] Gayen, S., Smarandache, F., Jha, S., Singh, M. K., Broumi, S., & Kumar, R. (2020). Introduction to plithogenic subgroup. In *Neutrosophic graph theory and algorithms* (pp. 213-259). IGI Global.
- [23] Gayen, S., Smarandache, F., Jha, S., Singh, M. K., Broumi, S., & Kumar, R. (2020). *Soft subring theory under interval-valued neutrosophic environment* (Vol. 36). Infinite Study.
- [24] Nirgude, V., Mahapatra, H., & Shivarkar, S. (2017). Face recognition system using principal component analysis & linear discriminant analysis method simultaneously with 3d morphable model and neural network BPNN method. *Global journal of advanced engineering technologies and sciences*, 4(1), 1-6.
- [25] Broumi, S., Dey, A., Talea, M., Bakali, A., Smarandache, F., Nagarajan, D., ... & Kumar, R. (2019). Shortest path problem using Bellman algorithm under neutrosophic environment. *Complex & intelligent systems*, 5(4), 409-416.
- [26] Mohapatra, H. I. T. E. S. H. (2009). *HCR using neural network* (Master Thesis, Biju Patnaik University of Technology). Retrieved from [10.13140/RG.2.2.21287.24488](https://doi.org/10.13140/RG.2.2.21287.24488)
- [27] Mohapatra, H., & Rath, A. K. (2021). A fault tolerant routing scheme for advanced metering infrastructure: an approach towards smart grid. *Cluster computing*, 24(3), 2193-2211.
- [28] Panda, M., Pradhan, P., Mohapatra, H., & Barpanda, N. K. (2019). Fault tolerant routing in heterogeneous environment. *International journal of scientific & technology research*, 8(8), 1009-1013.
- [29] Kumar, R., Edalatpanah, S. A., Jha, S., Gayen, S., & Singh, R. (2019). Shortest path problems using fuzzy weighted arc length. *International journal of innovative technology and exploring engineering*, 8(6), 724-731.
- [30] Kumar, R., Jha, S., & Singh, R. (2017). Shortest path problem in network with type-2 triangular fuzzy arc length. *Journal of applied research on industrial engineering*, 4(1), 1-7.
- [31] Parida, B. R., Rath, A. K., & Mohapatra, H. (2022). Binary self-adaptive salp swarm optimization-based dynamic load balancing in cloud computing. *International journal of information technology and web engineering (IJITWE)*, 17(1), 1-25.
- [32] Ande, V. K., & Mohapatra, H. (2015). SSO mechanism in distributed environment. *International journal of innovations & advancement in computer science (IJIACS)*, 4(6), 133-136.
- [33] Kumar, R., Jha, S., & Singh, R. (2020). A different approach for solving the shortest path problem under mixed fuzzy environment. *International journal of fuzzy system applications (IJFSA)*, 9(2), 132-161.
- [34] Mohapatra, H. (2018). *C programming: practice cpp*. Kindle Edition.
- [35] Kumar, R., Edalatpanah, S. A., Jha, S., Broumi, S., & Dey, A. (2018). *Neutrosophic shortest path problem*. Infinite Study.
- [36] Kumar, R., Edalatpanah, S. A., Jha, S., & Singh, R. (2019). *A novel approach to solve gaussian valued neutrosophic shortest path problems*. Infinite study.
- [37] Kumar, R., Edalatpanah, S. A., Jha, S., Broumi, S., & Dey, A. (2018). *Neutrosophic shortest path problem*. Infinite Study.
- [38] Kumar, R., Edalatpanah, S. A., & Mohapatra, H. (2020). Note on "optimal path selection approach for fuzzy reliable shortest path problem". *Journal of intelligent & fuzzy systems*, 39(5), 7653-7656.
- [39] Kumar, R., Edalatpanah, S. A., Jha, S., Broumi, S., Singh, R., & Dey, A. (2019). *A multi objective programming approach to solve integer valued neutrosophic shortest path problems*. Infinite Study.
- [40] Mohapatra, H., Panda, S., Rath, A., Edalatpanah, S., & Kumar, R. (2020). A tutorial on powershell pipeline and its loopholes. *International journal of emerging trends in engineering research*, 8(4), 975-982.
- [41] Kumar, R., Edalatpanah, S. A., Gayen, S., & Broumi, S. (2021). Answer note "a novel method for solving the fully neutrosophic linear programming problems: suggested modifications". In *neutrosophic sets and systems* (Vol. 39, p. 147). Infinite Study.
- [42] Su, K., Li, J., & Fu, H. (2011). Smart city and the applications. *2011 international conference on electronics, communications and control (ICECC)* (pp. 1028-1031). IEEE.
- [43] Panda, H., Mohapatra, H., & Rath, A. K. (2020). WSN-based water channelization: an approach of smart water. In *smart cities—opportunities and challenges* (pp. 157-166). Springer, Singapore.
- [44] Shahanas, K. M., & Sivakumar, P. B. (2016). Framework for a smart water management system in the context of smart city initiatives in India. *Procedia computer science*, 92, 142-147.
- [45] Mohapatra, H., & Rath, A. K. (2020, October). Nub less sensor based smart water tap for preventing water loss at public stand posts. *2020 IEEE microwave theory and techniques in wireless communications (MTTW)* (Vol. 1, pp. 145-150). IEEE.

- [46] Rout, S. S., Mohapatra, H., Nayak, R. K., Tripathy, R., Bhise, D., Patil, S. P., & Rath, A. K. (2020). Smart water solution for monitoring of water usage based on weather condition. *International journal*, 8(9), 5335-5343.
- [47] Mohapatra, H., & Rath, A. K. (2022). IoE based framework for smart agriculture. *Journal of ambient intelligence and humanized computing*, 13(1), 407-424.
- [48] Mohapatra, H., & Rath, A. K. (2021). An IoT based efficient multi-objective real-time smart parking system. *International journal of sensor networks*, 37(4), 219-232.
- [49] Mohapatra, H., & Rath, A. K. (2019). Detection and avoidance of water loss through municipality taps in India by using smart taps and ICT. *IET wireless sensor systems*, 9(6), 447-457.
- [50] Mohapatra, H. (2020). Offline drone instrumentalized ambulance for emergency situations. *IAES international journal of robotics and automation*, 9(4), 251-255.
- [51] Mohapatra, H., & Dalai, A. K. (2022, February). IoT based V2I framework for accident prevention. *2022 2nd international conference on artificial intelligence and signal processing (AISP)* (pp. 1-4). IEEE.
- [52] Sermanet, P., Eigen, D., Zhang, X., Mathieu, M., Fergus, R., & LeCun, Y. (2013). *Overfeat: integrated recognition, localization and detection using convolutional networks*. Retrieved from <https://doi.org/10.48550/arXiv.1312.6229>
- [53] Dalal, N., & Triggs, B. (2005, June). Histograms of oriented gradients for human detection. *2005 IEEE computer society conference on computer vision and pattern recognition (CVPR'05)* (Vol. 1, pp. 886-893). IEEE.
- [54] Felzenszwalb, P. F., Girshick, R. B., McAllester, D., & Ramanan, D. (2010). Object detection with discriminatively trained part-based models. *IEEE transactions on pattern analysis and machine intelligence*, 32(9), 1627-1645.
- [55] Wang, Z., Zhao, Y., Zhang, J., & Guo, Y. (2010, October). Research on motion detection of video surveillance system. *2010 3rd international congress on image and signal processing* (Vol. 1, pp. 193-197). IEEE.
- [56] Kavitha, K., & Tejaswini, A. (2012). VIBE: background detection and subtraction for image sequences in video. *International journal of computer science and information technologies*, 3(5), 5223-5226.
- [57] Turaga, P., Chellappa, R., & Veeraraghavan, A. (2010). Advances in video-based human activity analysis: challenges and approaches. *Advances in computers*, 80, 237-290.
- [58] Sen-Ching, S. C., & Kamath, C. (2004, January). Robust techniques for background subtraction in urban traffic video. In *Visual Communications and image processing 2004* (Vol. 5308, pp. 881-892). SPIE.
- [59] Ragland, K., & Tharcis, P. (2014). A survey on object detection, classification and tracking methods. *International journal of engineering research & technology (IJERT)*, 3(11), 622-628.
- [60] Tan, H. H., & Lim, K. H. (2019, April). Review of second-order optimization techniques in artificial neural networks backpropagation. *IOP conference series: materials science and engineering* (Vol. 495, No. 1, p. 012003). IOP Publishing.
- [61] Zhang, G., Wang, P., Chen, H., & Zhang, L. (2019). Wireless indoor localization using convolutional neural network and Gaussian process regression. *Sensors*, 19(11), 2508.
- [62] Farabet, C., Martini, B., Akselrod, P., Talay, S., LeCun, Y., & Culurciello, E. (2010, May). Hardware accelerated convolutional neural networks for synthetic vision systems. *Proceedings of 2010 IEEE international symposium on circuits and systems* (pp. 257-260). IEEE.
- [63] Ciresan, D. C., Meier, U., Masci, J., Gambardella, L. M., & Schmidhuber, J. (2011, June). Flexible, high performance convolutional neural networks for image classification. *Twenty-second international joint conference on artificial intelligence*. AAAI Press.
- [64] Gao, B., & Pavel, L. (2017). *On the properties of the softmax function with application in game theory and reinforcement learning*. Retrieved from <https://doi.org/10.48550/arXiv.1704.00805>
- [65] LeCun, Y., Kavukcuoglu, K., & Farabet, C. (2010, May). Convolutional networks and applications in vision. *Proceedings of 2010 IEEE international symposium on circuits and systems* (pp. 253-256). IEEE.
- [66] Zhang, S., Tong, H., Xu, J., & Maciejewski, R. (2018, December). Graph convolutional networks: algorithms, applications and open challenges. *International conference on computational social networks* (pp. 79-91). Springer, Cham.
- [67] LeCun, Y., Bottou, L., Bengio, Y., & Haffner, P. (1998). Gradient-based learning applied to document recognition. *Proceedings of the IEEE*, 86(11), 2278-2324.
- [68] Baccouche, M., Mamalet, F., Wolf, C., Garcia, C., & Baskurt, A. (2011, November). Sequential deep learning for human action recognition. *International workshop on human behavior understanding* (pp. 29-39). Springer, Berlin, Heidelberg.
- [69] Ji, S., Xu, W., Yang, M., & Yu, K. (2012). 3D convolutional neural networks for human action recognition. *IEEE transactions on pattern analysis and machine intelligence*, 35(1), 221-231.